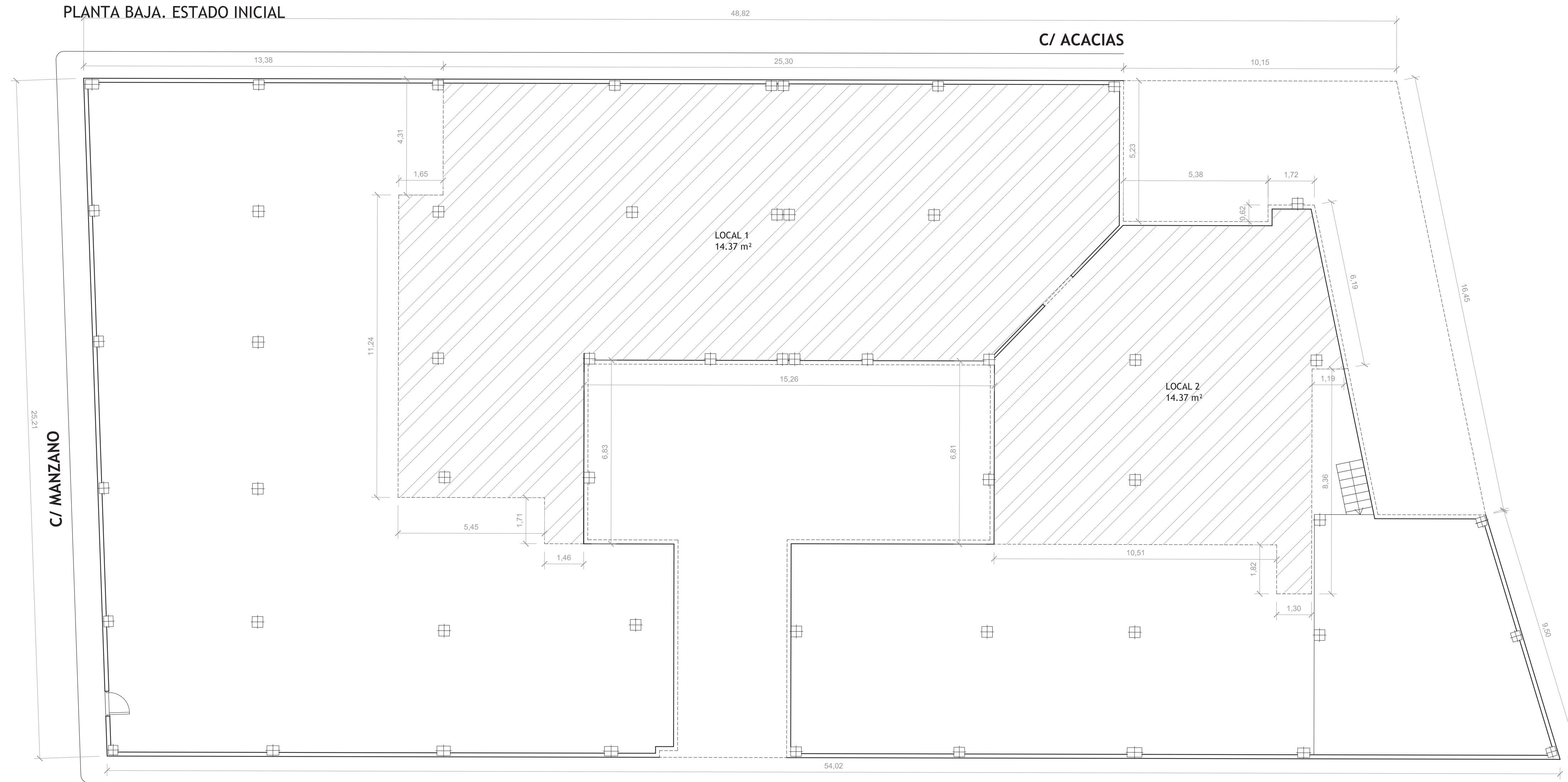


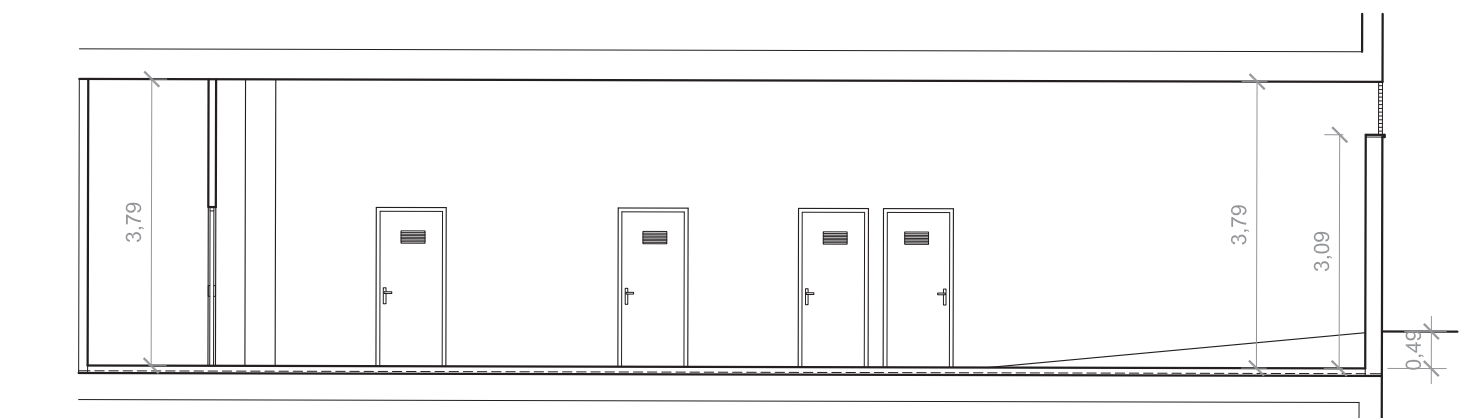
PLANTA BAJA. ESTADO INICIAL



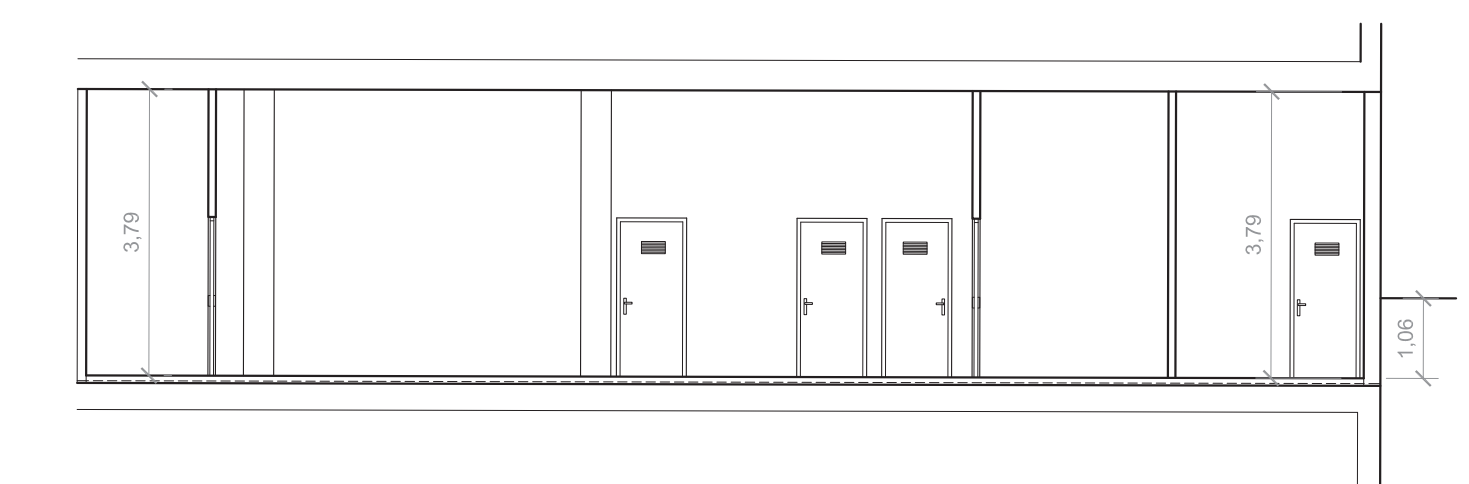
LOCAL A REFORMAR

LOCAL EN BRUTO
Superficies útiles en m²

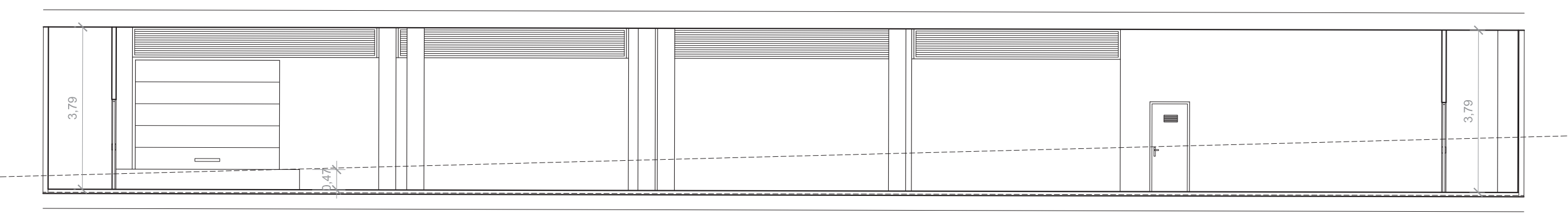
| | |
|-------------------|-----------------------|
| 1. Local 1 | 316.88 m ² |
| 2. Local 2 | 157.71 m ² |
| Sup. Útil. TOTAL | 474.59 m ² |
| Sup. Const. TOTAL | 480.01 m ² |



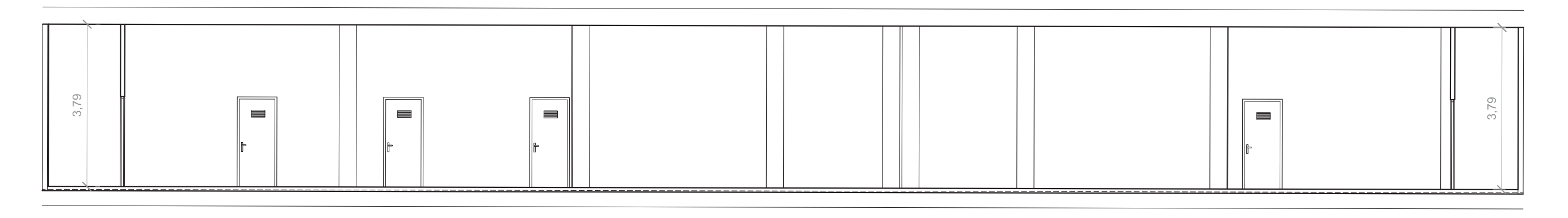
SECCIÓN 1-1'



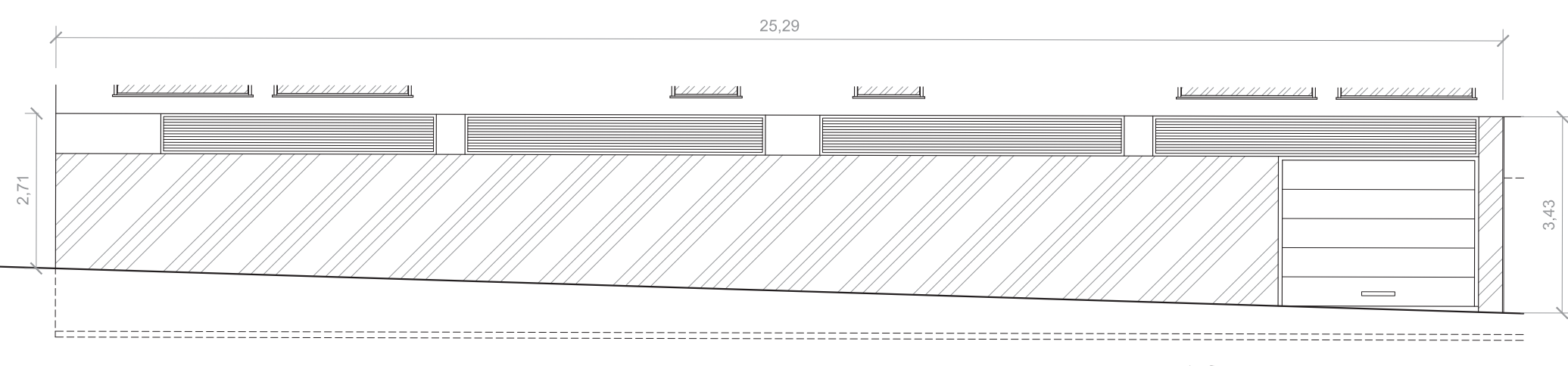
SECCIÓN 2-2'



SECCIÓN 3-3'

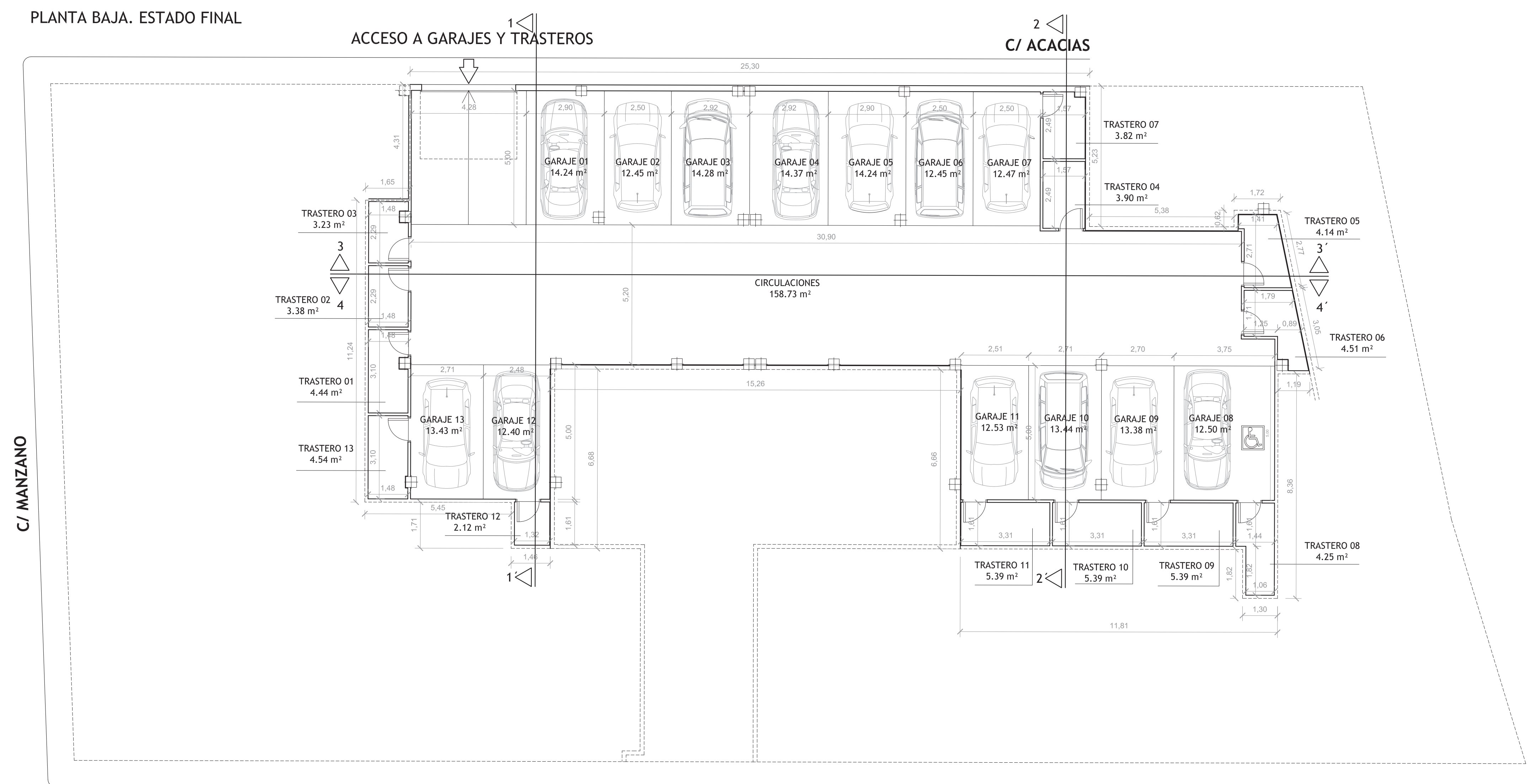


SECCIÓN 4-4'



FACHADA A C/ ACACIAS

PLANTA BAJA. ESTADO FINAL



GARAJES Y TRASTEROS
Superficies útiles en m²

| | |
|-------------------|-----------------------|
| 1. Circulaciones | 205.55 m ² |
| 2. Garaje 01 | 14.24 m ² |
| 3. Garaje 02 | 12.45 m ² |
| 4. Garaje 03 | 14.28 m ² |
| 5. Garaje 04 | 14.37 m ² |
| 6. Garaje 05 | 14.24 m ² |
| 7. Garaje 06 | 12.45 m ² |
| 8. Garaje 07 | 12.47 m ² |
| 9. Garaje 08 | 18.85 m ² |
| 10. Garaje 09 | 13.38 m ² |
| 11. Garaje 10 | 13.44 m ² |
| 12. Garaje 11 | 12.53 m ² |
| 13. Garaje 12 | 12.40 m ² |
| 14. Garaje 13 | 13.43 m ² |
| 15. Trastero 01 | 4.44 m ² |
| 16. Trastero 02 | 3.38 m ² |
| 17. Trastero 03 | 3.23 m ² |
| 18. Trastero 04 | 3.90 m ² |
| 19. Trastero 05 | 4.14 m ² |
| 20. Trastero 06 | 4.51 m ² |
| 21. Trastero 07 | 3.82 m ² |
| 22. Trastero 08 | 4.25 m ² |
| 23. Trastero 09 | 5.33 m ² |
| 24. Trastero 10 | 5.33 m ² |
| 25. Trastero 11 | 5.33 m ² |
| 26. Trastero 12 | 2.12 m ² |
| 27. Trastero 13 | 4.54 m ² |
| Sup. Útil. TOTAL | 438.40 m ² |
| Sup. Const. TOTAL | 480.01 m ² |