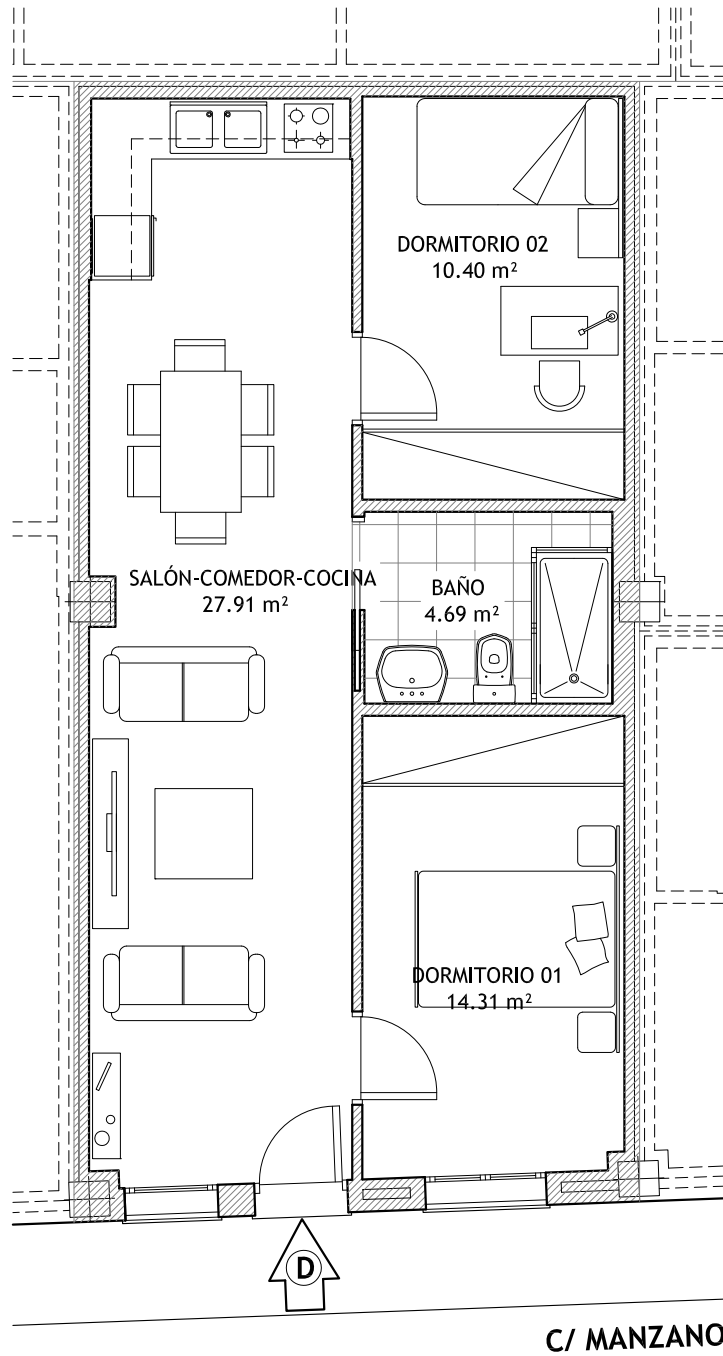


VIVIENDA D

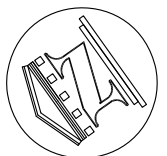


VIVIENDA (D)

Superficies útiles en m<sup>2</sup>

1. Salón-comedor-cocina	27.91 m <sup>2</sup>
2. Baño	4.69 m <sup>2</sup>
3. Dormitorio 01	14.31 m <sup>2</sup>
4. Dormitorio 02	10.40 m <sup>2</sup>

Sup. Útil TOTAL Viv D	57.31 m <sup>2</sup>
Sup. Const. TOTAL Viv D	62.94 m <sup>2</sup>



Escala 1/75

Arquitecto

ARSENIO PAREDES MOYA

Colegiado 445908  
C/ Luna, 11 06400 Don Benito (Badajoz) Tf. 686071232 ARSENIOP@meil.com

